



COLORADO
Department of Revenue
Enforcement Division - Marijuana

MED 2015 Mid-Year Update

Barbara Brohl

Executive Director
Colorado Department of Revenue

Ron Kammerzell

Senior Director of Enforcement
Colorado Department of Revenue

W. Lewis Koski

Director, Marijuana Enforcement Division
Colorado Department of Revenue



August 6, 2015

Colorado Marijuana Enforcement Division: Second Quarter 2015

Further analysis and discussion will be provided in the 2015 Annual Update which will be published in early calendar year 2016. If final totals are not provided in a table, the June 30th numbers represent the final data point for the close of the quarter. Data provided is through June 30, 2015 and 2014 data was harvested from the 2014 Annual Update.

Local Jurisdiction Marijuana Business Licensing Status (Update of Table 1 of 2014 Annual Update)	
Medical and Retail Marijuana Banned	222
Medical Marijuana Licensees Only	21
Retail Marijuana Licensees Only	9
Medical and Retail Marijuana Licensees	70
Total	322

Local authorities have the authority to ban medical or retail commercial marijuana businesses from operating within their jurisdiction.

Business Licenses Year to Date (Update of Table 2 of 2014 Annual Update)						
	January	February	March	April	May	June
<u>Medical Marijuana Businesses</u>						
Centers	505	504	503	503	511	512
Cultivation Operations	747	756	748	744	762	763
Infused Product Manufacturers	168	171	175	173	181	183
Total	1,420	1,431	1,426	1,420	1,454	1,458
<u>Retail Marijuana Establishments</u>						
Stores	334	341	356	364	361	372
Cultivation Facilities	415	431	444	452	463	471
Product Manufacturing Facilities	103	107	118	123	126	132
Testing Facilities	17	18	19	19	19	19
Total	869	897	937	958	969	994
Total Medical and Retail Licenses	2,289	2,328	2,363	2,378	2,423	2,452

**Occupational Licensing Year to Date
Medical Marijuana Occupational Licenses
(Update of Table 3 of 2014 Annual Update)**

	January	February	March	April	May	June	Total
Key License Issued	245	256	303	292	243	277	1,616
Key Licenses Renewed	19	18	33	39	54	73	236
Support Licenses Issued	882	835	956	887	840	881	5,281
Support Licenses Renewed	21	33	45	40	57	61	257
Total Occupational Licenses Issued	1,167	1,142	1,337	1,258	1,194	1,292	7,390
Total Number of Valid Occupational Licenses *	16,900	17,898	18,651	19,596	20,476	21,336	21,336
Key Licenses Expired	12	16	16	19	18	40	121
Support Licenses Expired	57	48	70	67	62	108	412
Total Occupational Badges Expired	69	64	86	86	80	148	533
Percent of Occupational Licenses Renewed	36.70%	44.35%	47.56%	47.88%	58.12%	47.52%	47.02%
Percent of Occupational Licenses Expired	63.30%	55.65%	52.44%	52.12%	41.88%	52.48%	52.98%

Retail Marijuana Occupational Licenses

	January	February	March	April	May	June	Total
Occupational Licenses	7	0	3	11	12	0	33

Occupational Licensee data are a month-end total that illustrate how many of each category was processed during any given month. Individuals holding Medical Marijuana Occupational licenses may work within the Medical or Retail Marijuana Industries, Retail Occupational Licensees may only work within the Retail Marijuana Industry.

Volume of Marijuana within the Regulated Commercial System

Average of Medical Marijuana Plants Cultivated (Update of Table 4 of 2014 Annual Update)

	January	February	March	April	May	June
Average Authorized Plants	621,120	621,339	619,194	617,645	611,474	615,347
Average Cultivated (Vegetative & Flower*) Plants	304,149	313,218	318,680	316,247	310,070	302,089
Percentage of Authorized Growth Capacity	48.9%	50.4%	51.5%	51%	51%	49%
Average Vegetative* Plants	170,431	180,426	183,364	175,119	171,669	171,442
Average Flower* Plants	133,718	132,792	135,315	141,128	138,401	130,647

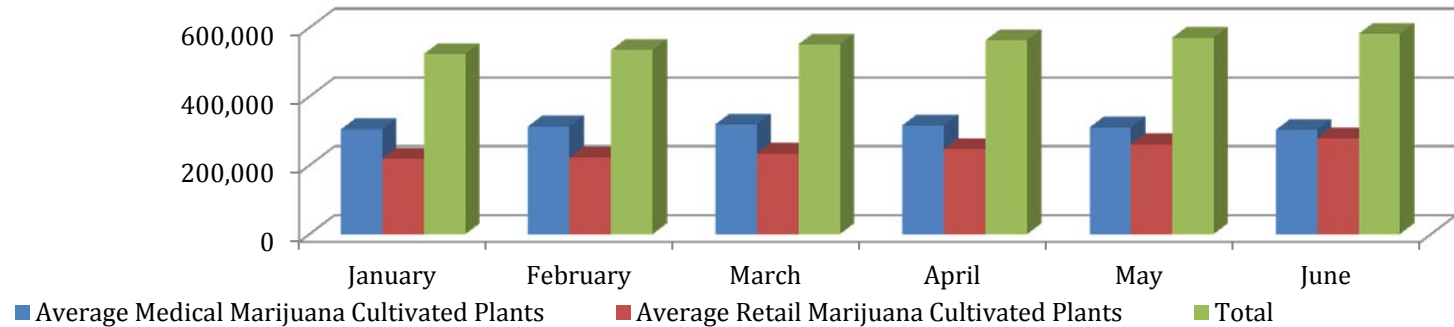
Average of Retail Marijuana Plants Cultivated (Update to Table 5 of 2014 Annual Update)

	January	February	March	April	May	June
Average Cultivated (Vegetative & Flower*) Plants	219,688	221,829	232,869	247,066	260,656	283,551
Average Vegetative* Plants	125,306	123,787	131,229	139,354	148,188	165,418
Average Flower* Plants	94,381	98,042	101,640	107,712	112,468	118,133

*Vegetative and Flower are phases in the marijuana plant's growth cycle.

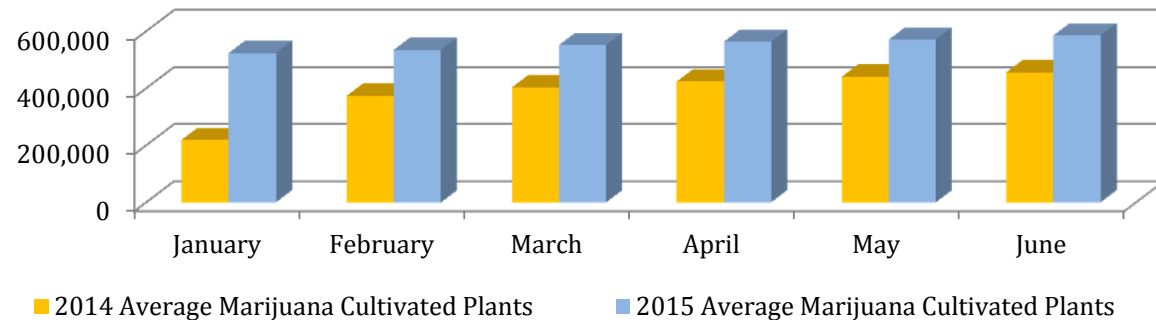
Monthly Average of Marijuana Plants Cultivated (Update to Table 6 of 2014 Annual Report)

	January	February	March	April	May	June
Average Medical Marijuana Cultivated Plants	304,149	313,218	318,680	316,248	310,070	302,090
Average Retail Marijuana Cultivated Plants	219,688	221,830	232,869	247,066	260,656	283,552
Total	523,837	535,048	551,549	563,314	570,726	585,642



2014/2015 Comparison Monthly Average of Marijuana Plants Cultivated

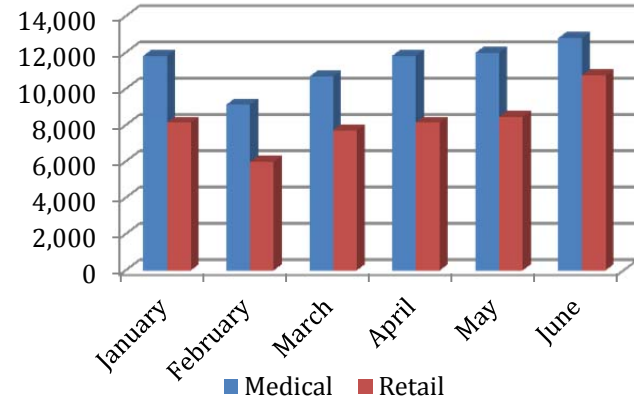
	January	February	March	April	May	June
2014 Average Marijuana Cultivated Plants	219,243	373,612	402,915	423,991	440,432	456,486
2015 Average Marijuana Cultivated Plants	523,837	535,048	551,549	563,314	570,726	585,642



Volume of Marijuana Sold within the Commercial Regulated System

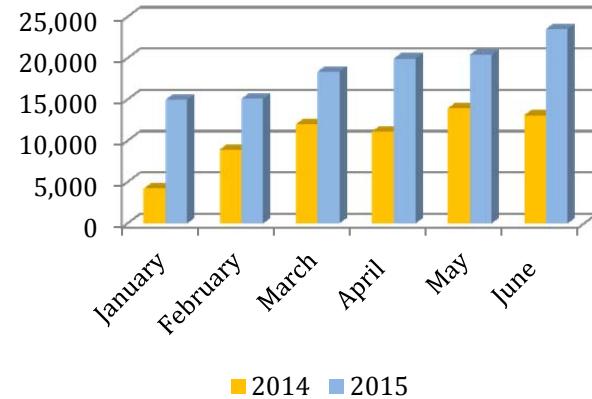
Total Pounds of Flower Sold (Update of Table 7 of 2014 Annual Update)

	January	February	March	April	May	June
Medical	8,930	9,130	10,673	11,827	11,981	12,797
Retail	6,049	5,968	7,712	8,135	8,448	10,743



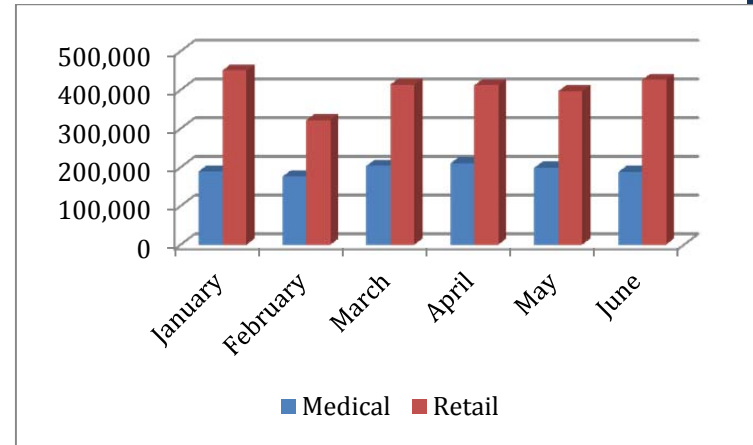
2014/2015 Second Quarter Comparison Total Pounds of Flower Sold in Both Industries

	January	February	March	April	May	June
2014	4,220	8,948	12,006	11,135	13,965	13,095
2015	14,979	15,098	18,385	19,962	20,429	23,540



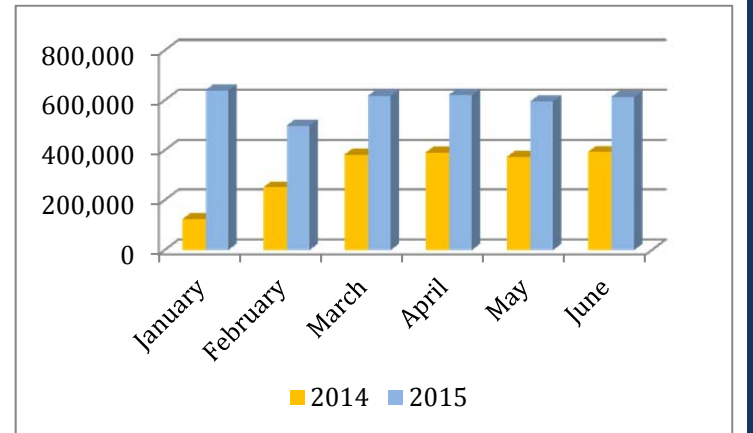
Total Units of Infused Edibles Sold (Update of Table 8 of 2014 Annual Update)

	January	February	March	April	May	June
Medical	189,317	175,900	203,608	210,071	198,481	187,488
Retail	450,392	322,270	413,657	411,837	396,503	425,746



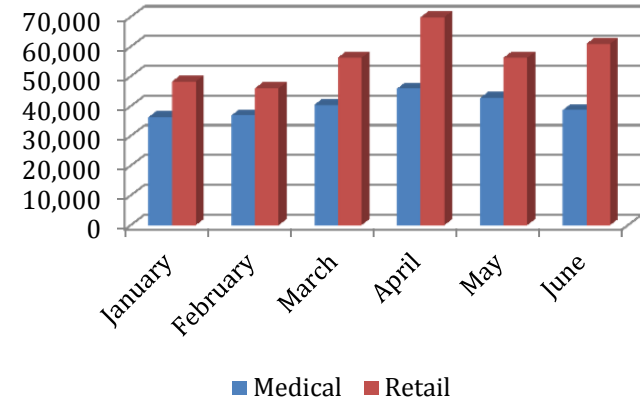
2014/2015 Second Quarter Comparison Total Units of Infused Edibles Sold in Both Industries

	January	February	March	April	May	June
2014	123,166	251,269	382,411	390,797	373,357	393,027
2015	639,709	498,170	617,265	621,908	594,984	613,234



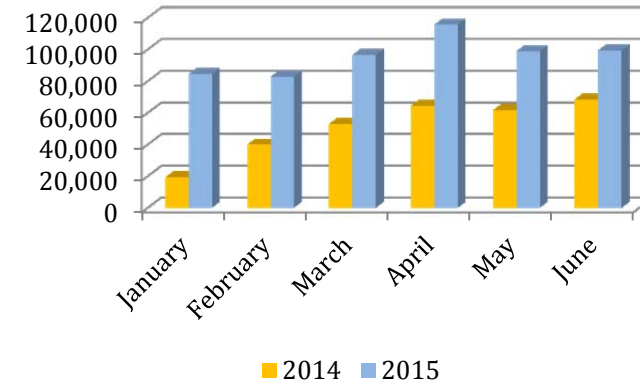
Total Units of Infused Non-Edibles Sold (Update of Table 9 of 2014 Annual Update)

	January	February	March	April	May	June
Medical	36,317	36,873	40,433	45,914	42,731	38,703
Retail	48,310	46,030	56,303	69,961	56,295	60,970



2014/2015 Second Quarter Comparison Total Units of Infused Non-Edibles Sold in Both Industries

	January	February	March	April	May	June
2014	19,376	40,026	53,114	64,637	61,781	68,656
2015	84,627	82,903	96,736	115,875	99,026	99,673



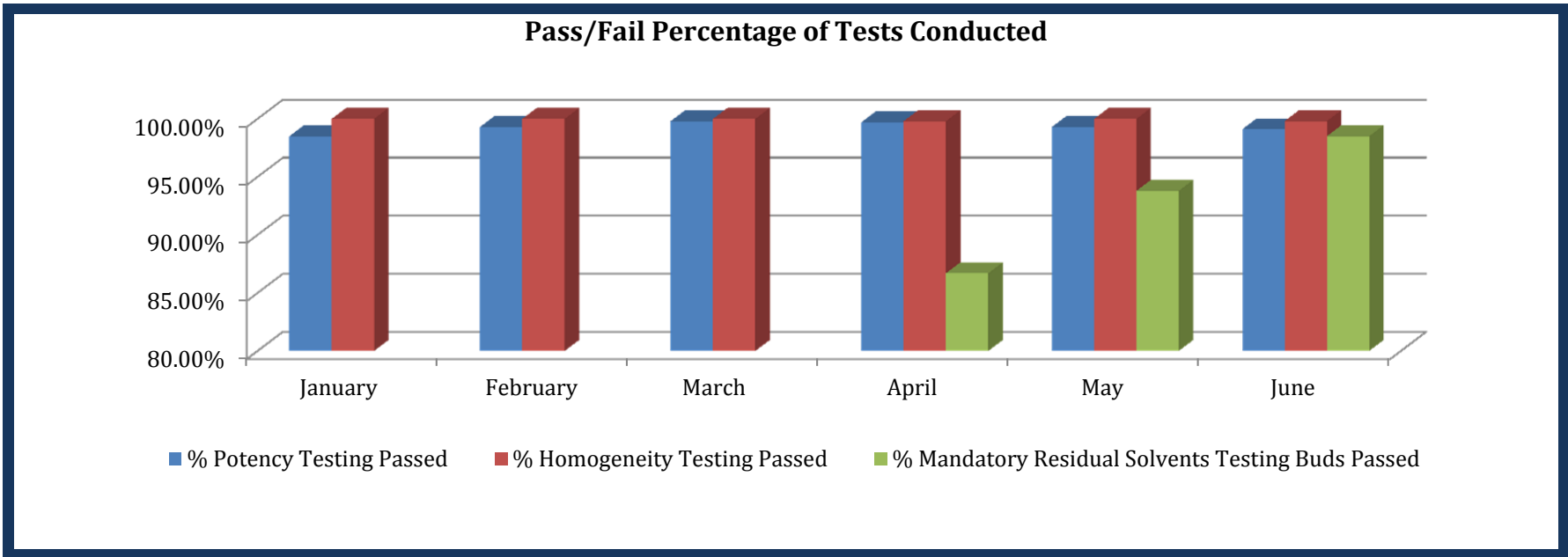
Retail Marijuana Mandated Testing

Potency Testing for Edibles (Update of Table 10 of 2014 Annual Update)						
	January	February	March	April	May	June
Total Mandatory Potency Tests	750	1,039	1,026	2,600	1,437	1,723
Mandatory Potency Testing Edibles (Passed)	739	1,032	1,023	2,594	1,427	1,709
Mandatory Potency Testing Edible (Failed)	11	7	3	6	10	14
% Mandatory Potency Testing Passed	98.5%	99.3%	99.8%	99.7%	99.3%	99.2%

Homogeneity Testing for Edibles (Update of Table 11 of 2014 Annual Update)						
	January	February	March	April	May	June
Mandatory Homogeneity Testing Edibles	332	405	413	478	364	490
Mandatory Homogeneity Testing Edible (Passed)	332	405	413	477	364	489
Mandatory Homogeneity Testing Edible (Failed)	0	0	0	1	0	1
% Mandatory Homogeneity Testing Passed	100%	100%	100%	99.8%	100%	99.8%

Residual Solvents Testing for Concentrates			
	April	May	June
Mandatory Residual Solvents Testing	686	828	651
Mandatory Residual Solvents Testing (Passed)	595	777	641
Mandatory Residual Solvents Testing (Failed)	91	51	10
% Mandatory Residual Solvents Testing Passed	86.7%	93.8%	98.5%

Solvent testing began April 7, 2015.



Licensing and Enforcement Activity

Changes to License	Total
	388
Change of Location	86
Change of Ownership	95
Change of Trade Name	25
Modification of Premises	182
New Licensing Investigations (New Businesses or Owners)	538
Corporate Background Investigation	298
Individual Background Investigation	240
Compliance Monitoring & Regulatory/Criminal Enforcement	240

Administrative Actions Taken by the State Licensing Authority

Second Quarter Activity								
	Medical Centers	Medical Cultivations	Medical MIPs*	Retail Stores	Retail Cultivations	Retail Product Manufacturers	Retail Testing Facilities	Owners
Assurance of Voluntary Compliance	2	1	0	1	2	0	0	0
Denials	1	1	0	2	0	0	0	6
Summary Suspensions	1	1	0	0	0	0	0	3
Order to Show Cause	8	9	1	1	1	0	0	24
Stipulation, Agreement and Order	6	7	1	3	3	1	0	11

Year to Date (January 1 – June 30, 2015)								
	Medical Centers	Medical Cultivations	Medical MIPs*	Retail Stores	Retail Cultivations	Retail Product Manufacturers	Retail Testing Facilities	Owners
Assurance of Voluntary Compliance	7	14	0	3	3	0	0	3
Denials	1	1	0	3	2	0	0	9
Summary Suspensions	4	6	1	2	3	1	0	8
Order to Show Cause	14	23	5	2	4	3	0	34
Stipulation, Agreement and Order	14	18	5	5	10	2	0	19

*Medical Marijuana Infused Product Manufacturers (MIPs)