



**COLORADO**  
Department of Revenue  
Enforcement Division - Marijuana

# 2015 First Quarter Update to MED 2014 Annual Update

---

**Barbara Brohl**

Executive Director  
Colorado Department of Revenue

**Ron Kammerzell**

Deputy Senior Director of Enforcement  
Colorado Department of Revenue

**W. Lewis Koski**

Director, Marijuana Enforcement Division  
Colorado Department of Revenue



July 15, 2015

## Colorado Marijuana Enforcement Division: First Quarter 2015

In keeping with the Division's commitment to transparency, this update will provide quarterly data points related to the 2014 Annual Update. This update is not intended as a comprehensive document such as the Annual Update, but rather is an effort to provide 2015 First Quarter (January – March) data. Further analysis and discussion will be provided in the 2015 Annual Update which will be published in early calendar year 2016. If final totals are not provided in a table, the March numbers represent the final data point for the close of the quarter. All data provided is through March 31, 2015.

### Update of Table 1 of Annual Update

Local Jurisdiction Marijuana Business Licensing Status	
Medical and Retail Marijuana Banned	223
Medical Marijuana Licensees Only	21
Retail Marijuana Licensees Only	8
Medical and Retail Marijuana Licensees	70
<b>Total</b>	<b>322</b>

Local authorities have the authority to ban medical or retail commercial marijuana businesses from operating within their jurisdiction.

### Update of Table 2 of Annual Update

Business License Totals First Quarter 2015			
	<u>January</u>	<u>February</u>	<u>March</u>
<b><u>Medical Marijuana Businesses</u></b>			
Centers	505	504	503
Cultivation Operations	747	756	748
Infused Product Manufacturers	168	171	175
<b>Total Licensed Medical Businesses</b>	<b>1,420</b>	<b>1,431</b>	<b>1,426</b>
<b><u>Retail Establishments</u></b>			
Stores	334	341	356
Cultivation Facilities	415	431	444
Product Manufacturing Facilities	103	107	118
Testing Facilities	17	18	19
<b>Total Licensed Retail Marijuana Establishments</b>	<b>869</b>	<b>897</b>	<b>937</b>
<b>Total Medical and Retail Licenses</b>	<b>2,289</b>	<b>2,328</b>	<b>2,363</b>

Update of Table 3 of Annual Update

<b>Occupational Licensing Data First Quarter 2015</b>				
<b>First Quarter 2015</b>				
<b>Medical Marijuana Occupational Licenses</b>				
	<u>January</u>	<u>February</u>	<u>March</u>	<u>Total</u>
Key License Issued	245	256	303	<b>804</b>
Key Licenses Renewed	19	18	33	<b>70</b>
Support Licenses Issued	882	835	956	<b>2673</b>
Support Licenses Renewed	21	33	45	<b>99</b>
<b>Total Occupational Licenses Issued</b>	<b>1,167</b>	<b>1,142</b>	<b>1,337</b>	<b>3,646</b>
<b>Total Number of Valid Occupational Licenses *</b>	<b>16,900</b>	<b>17,898</b>	<b>18,651</b>	<b>18,651</b>
Key Licenses Expired	12	16	16	<b>44</b>
Support Licenses Expired	57	48	70	<b>175</b>
<b>Total Occupational Badges Expired</b>	<b>69</b>	<b>64</b>	<b>86</b>	<b>219</b>
Percent of Occupational Licenses Renewed	36.70%	44.35%	47.56%	<b>43.56%</b>
Percent of Occupational Licenses Expired	63.30%	55.65%	52.44%	<b>56.44%</b>
<b>Retail Marijuana Occupational Licenses</b>				
	<b>January</b>	<b>February</b>	<b>March</b>	<b>Total</b>
Occupational Licenses	<b>7</b>	<b>0</b>	<b>3</b>	<b>10</b>

Occupational Licensee data are month-end totals that illustrate how many of each category were processed during any given month. Individuals holding Medical Marijuana Occupational licenses may work within the Medical or Retail Marijuana Industries, Retail Occupational Licensees may only work within the Retail Marijuana Industry.

\*This is a new data point added to the update that provides the total number of valid occupational licenses at the close of each month.

## Volume of Marijuana within the Regulated Commercial System

### Update of Table 4 of Annual Update

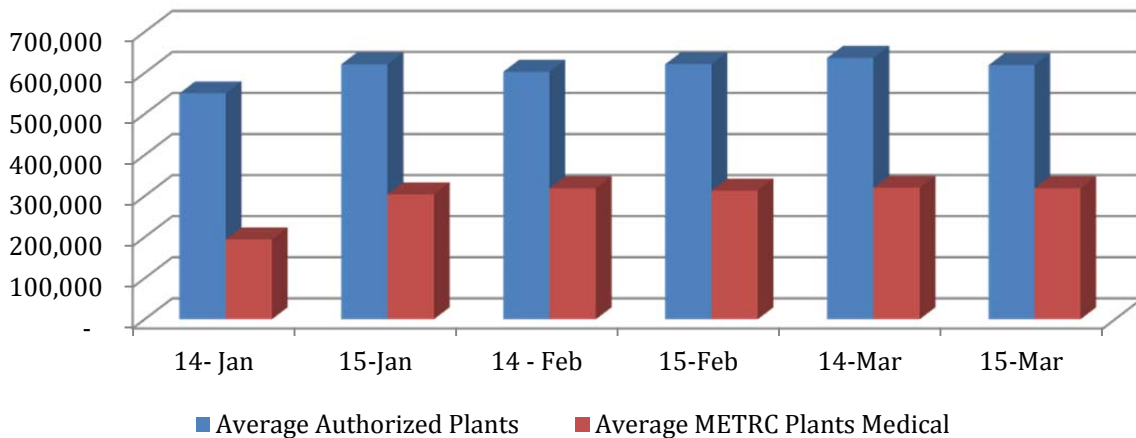
#### Average of Medical Marijuana Plants Cultivated

	<u>January</u>	<u>February</u>	<u>March</u>
Average Authorized Plants	621,120	621,339	619,194
Average Cultivated (Vegetative & Flower) Plants	304,149	313,218	318,680
Percentage of Authorized Growth Capacity	48.9%	50.4%	51.5%
Average Vegetative* Plants	170,431	180,426	183,364
Average Flower* Plants	133,718	132,792	135,315

\*Vegetative and Flower are phases in the marijuana plant's growth cycle.

#### Average of Medical Marijuana Plants Cultivated 2014\*/2015 First Quarter Comparison

	January 2014	January 2015	February 2014	February 2015	March 2014	March 2015
Average Authorized Plants	550,187	621,120	602,830	621,339	636,429	619,194
Average Cultivated Plants	194,476	304,149	318,694	313,218	319,889	318,680



\*Data taken from the Annual Update

Update of Table 5 of Annual Update

**Average of Retail Marijuana Plants Cultivated  
First Quarter 2015**

	January	February	March
Average Cultivated (Vegetative & Flower) Plants	219,68	221,829	232,869
Average Vegetative Plants	125,306	123,787	131,229
Average Flower Plants	94,381	98,042	101,640

\*Vegetative and Flower are phases in the marijuana plant's growth cycle.

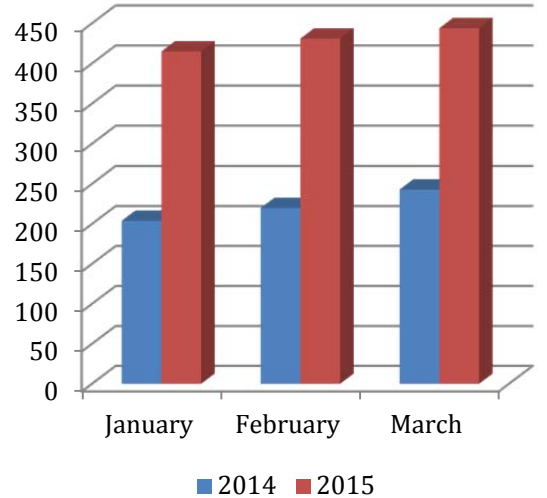
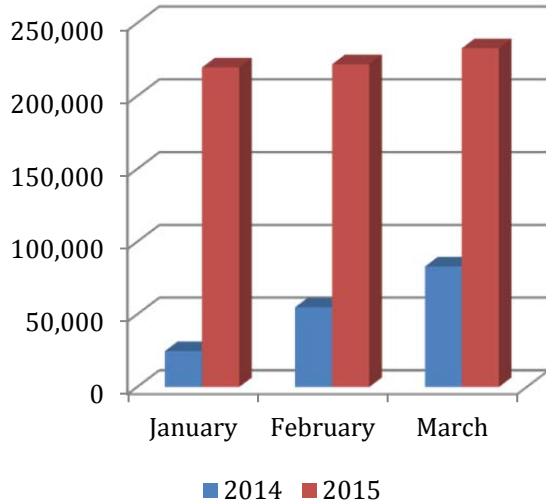
**Average of Retail Marijuana Plants Cultivated  
2014\*/2015 First Quarter Comparison**

**Average Cultivated Retail Plants**

	January	February	March
<b>2014</b>	24,767	54,918	83,026
<b>2015</b>	219,688	221,830	232,869

**Licensed Retail Cultivations**

	January	February	March
<b>2014</b>	204	220	243
<b>2015</b>	415	431	444

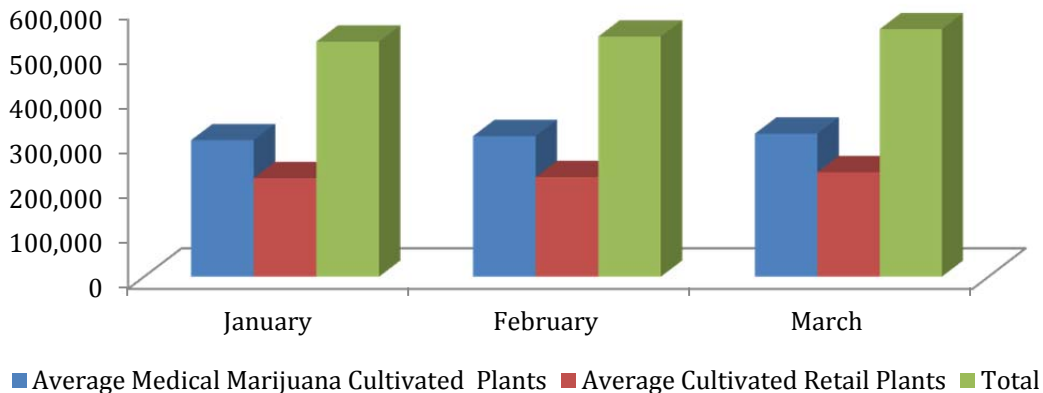


\*Data taken from the Annual Update

Update to Table 6 of Annual Update

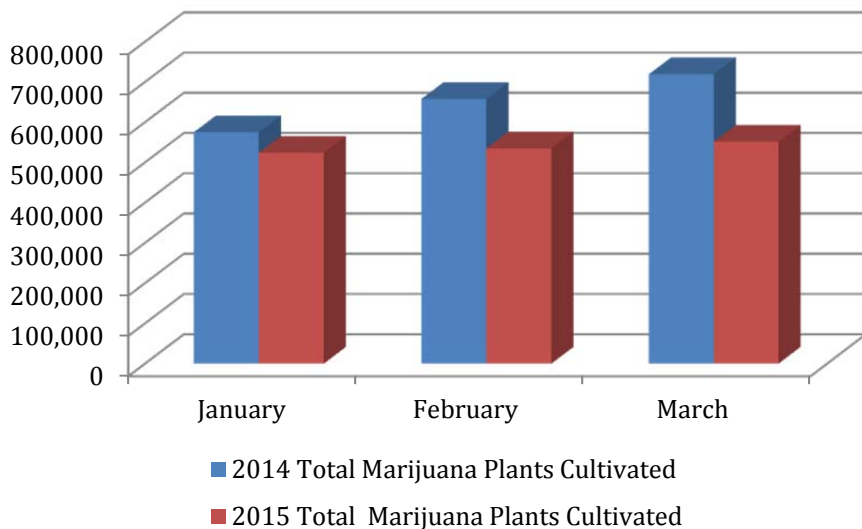
**Average of Marijuana Plants Cultivated  
First Quarter 2015**

	<b>January</b>	<b>February</b>	<b>March</b>
Average Medical Marijuana Cultivated Plants	304,149	313,218	318,680
Average Retail Marijuana Cultivated Plants	219,688	221,830	232,869
<b>Totals</b>	<b>523,837</b>	<b>535,048</b>	<b>551,549</b>



**Average of Marijuana Plants Cultivated  
2014\*/2015 First Quarter Comparison**

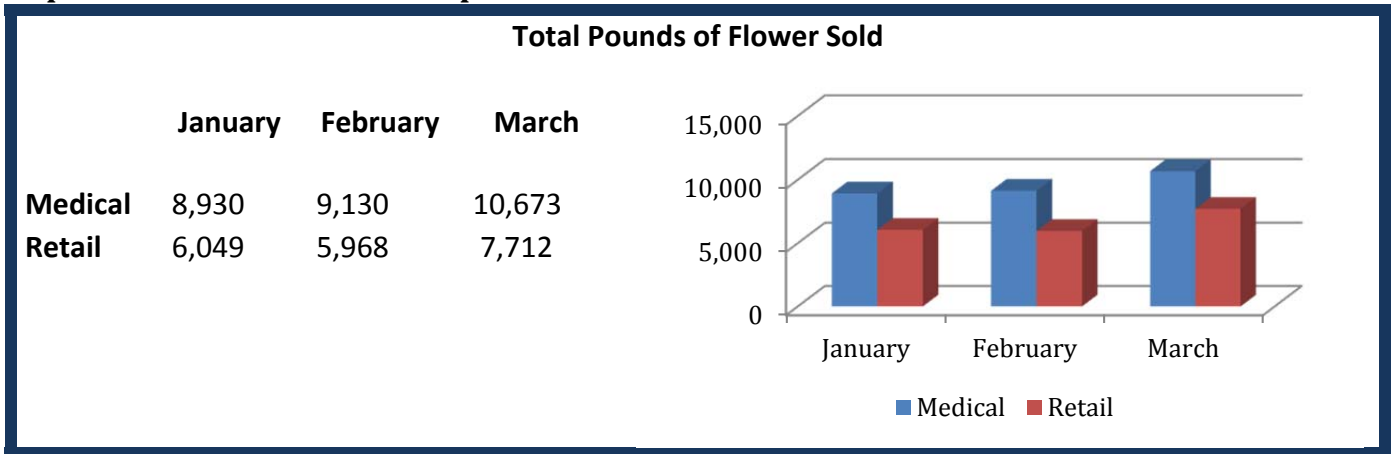
	<b>January</b>	<b>February</b>	<b>March</b>
2014 Total Marijuana Plants Cultivated	574,954	657,748	719,455
2015 Total Marijuana Plants Cultivated	523,837	535,048	551,549



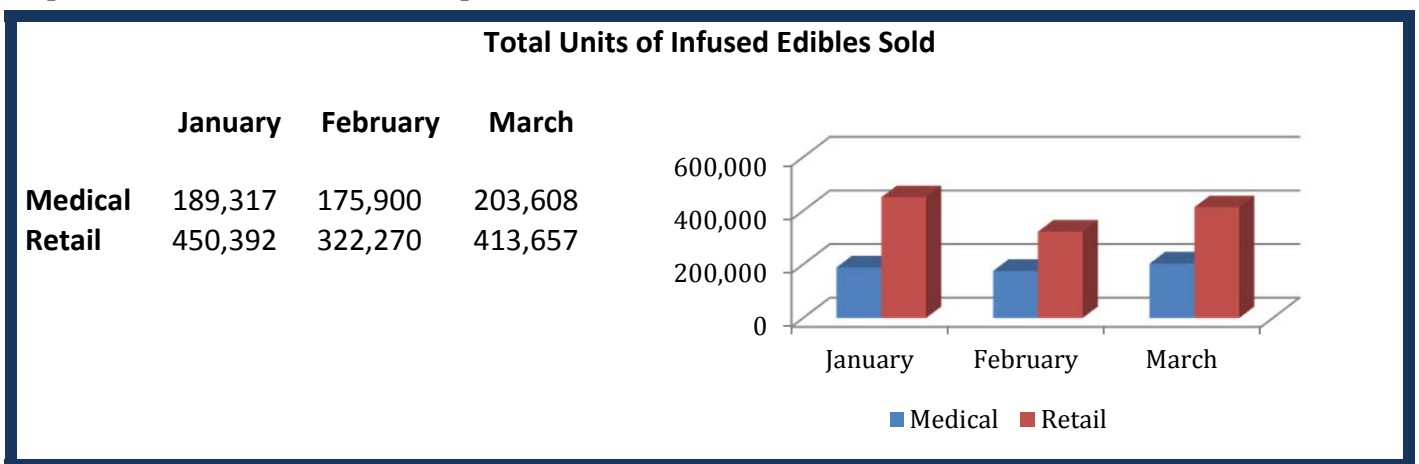
\*Data taken from the Annual Update

### Sales Volume of Marijuana within the Commercial Regulated System First Quarter 2015

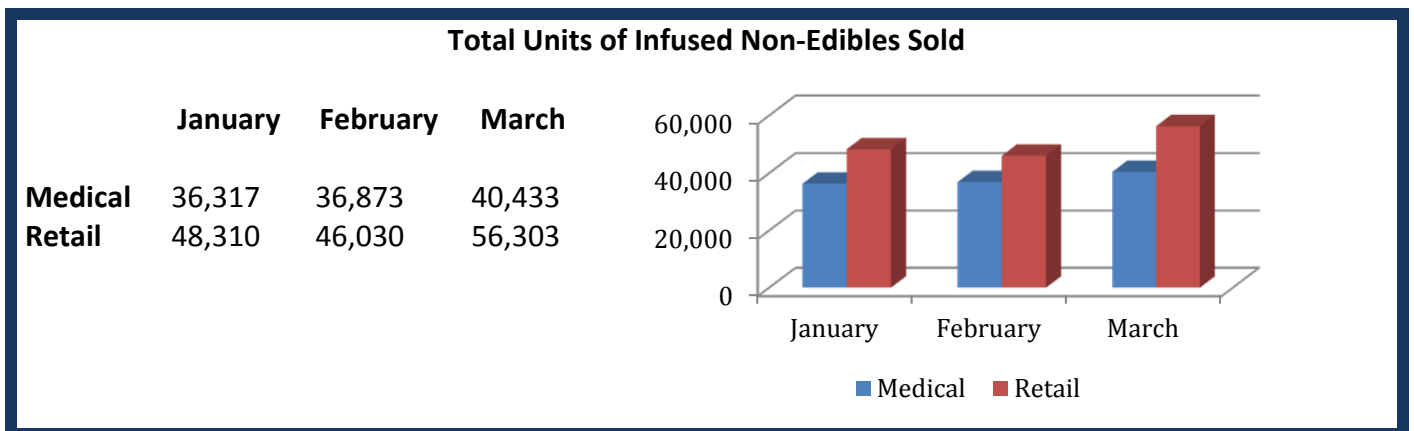
#### Update of Table 7 of Annual Update



#### Update of Table 8 of Annual Update



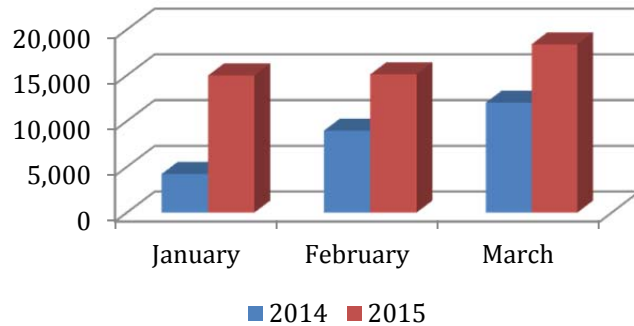
#### Update of Table 9 of Annual Update



**2014\*/2015 First Quarter Comparison of Medical and Retail Marijuana Sales**

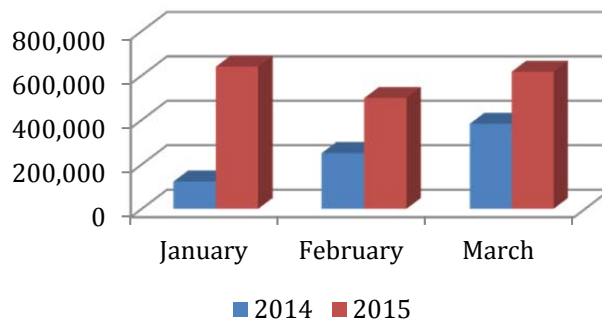
**Total Pounds of Flower Sold in Both Industries**

	January	February	March
<b>2014</b>	4,220	8,948	12,006
<b>2015</b>	14,979	15,098	18,385



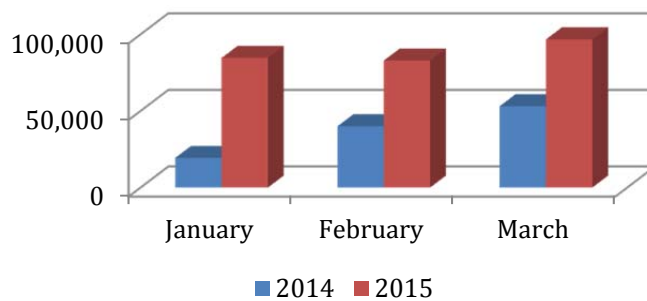
**Total Units of Infused Edibles Sold in Both Industries**

	January	February	March
<b>2014</b>	123,166	251,269	382,411
<b>2015</b>	639,709	498,170	617,265



**Total Units of Infused Non-Edibles Sold in Both Industries**

	January	February	March
<b>2014</b>	19,376	40,026	53,114
<b>2015</b>	84,627	82,903	96,736



\*Data taken from the Annual Update



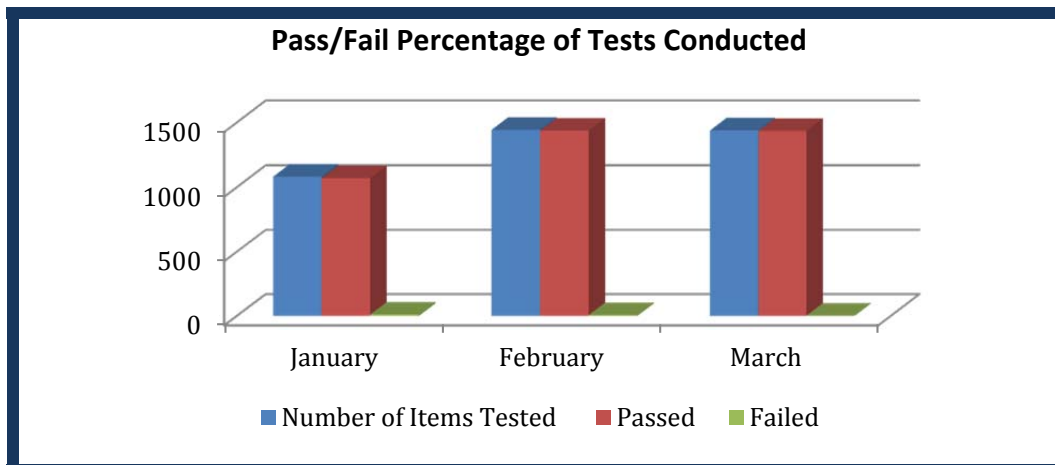
**Retail Marijuana Mandated Testing  
First Quarter 2015**

**Update of Table 10 of Annual Update**

<b>Potency Testing for Edibles</b>				
	<b>January</b>	<b>February</b>	<b>March</b>	<b>Totals</b>
Total Mandatory Potency Tests	750	1,039	1,026	<b>2,815</b>
Mandatory Potency Testing Edibles (Passed)	739	1,032	1,023	<b>2,794</b>
Mandatory Potency Testing Edible (Failed)	11	7	3	<b>21</b>
Mandatory Potency Testing Passed (%)	<b>98.5%</b>	<b>99.3%</b>	<b>99.8%</b>	<b>99.3%</b>

**Update of Table 11 of Annual Update**

<b>Homogeneity Testing for Edibles</b>				
	<b>January</b>	<b>February</b>	<b>March</b>	<b>Totals</b>
Mandatory Homogeneity Testing Edibles	332	405	413	1,150
Mandatory Homogeneity Testing Edible (Passed)	332	405	413	1,150
Mandatory Homogeneity Testing Edible (Failed)	0	0	0	0
Mandatory Homogeneity Testing Passed (%)	<b>100%</b>	<b>100%</b>	<b>100%</b>	<b>100%</b>



**Licensing and Enforcement Activity**

<b>Changes to License</b>	<b>Total</b>
	<b>203</b>
Change of Location	47
Change of Ownership	51
Change of Trade Name	23
Modification of Premises	82
<b>New Licensing Investigations (New Businesses or Owners)</b>	<b>317</b>
Corporate Background Investigation	161
Individual Background Investigation	156
<b>Compliance Monitoring &amp; Regulatory/Criminal Enforcement</b>	<b>198</b>

**Administrative Actions Taken by the State Licensing Authority**

**Update of Table 14 of Annual Update**

**Assurance of Voluntary Compliance (AVC)**

	Jan	Feb	Mar	TOTAL
Medical Center	2	2	1	5
Medical Cultivation	3	9	1	13
Medical Infused Product	0	0	0	0
Retail Store	1	1	0	2
Retail Cultivation	0	1	0	1
Retail Products	0	0	0	0
Retail Testing	0	0	0	0
Owner*/Key/Support	1	2	0	3
Vendor	1	0	0	1
<b>Total Licenses</b>	<b>8</b>	<b>15</b>	<b>2</b>	<b>25</b>
<b>Total AVCs Issued</b>	<b>5</b>	<b>7</b>	<b>1</b>	<b>13</b>

\*The business owner licenses are associated Key Persons.

**Update of Table 15 of Annual Update**

<b>Notices of Denial Issued (NOD)</b>				
	<b>Jan</b>	<b>Feb</b>	<b>Mar</b>	<b>Total</b>
Medical Center	0	0	0	0
Medical Cultivation	0	0	0	0
Medical Infused Products	0	0	0	0
Retail Store	1	0	0	1
Retail Cultivation	1	1	0	2
Retail Products	0	0	0	0
Retail Testing	0	0	0	0
Owner*/Key/Support	2	1	0	3
<b>Total Licenses</b>	<b>4</b>	<b>2</b>	<b>0</b>	<b>6</b>
<b>Total NOD Issued</b>	<b>2</b>	<b>1</b>	<b>0</b>	<b>3</b>

**Update to Table 16 of Annual Update**

<b>Summary Suspensions</b>				
	<b>Jan</b>	<b>Feb</b>	<b>Mar</b>	<b>Total</b>
Medical Center	1	1	1	3
Medical Cultivation	3	1	1	5
Medical Infused Products	1	0	0	1
Retail Store	1	0	1	2
Retail Cultivation	2	0	1	3
Retail Products	1	0	0	1
Retail Testing	0	0	0	0
Owner*/Key/Support	1	1	3	5
<b>Total Licenses</b>	<b>10</b>	<b>3</b>	<b>7</b>	<b>20</b>
<b>Total Suspensions Issued</b>	<b>1</b>	<b>1</b>	<b>2</b>	<b>4</b>

**Update to Table 17 of Annual Update**

<b>Orders to Show Cause</b>				
	<b>Jan</b>	<b>Feb</b>	<b>Mar</b>	<b>Total</b>
Medical Center	2	1	3	6
Medical Cultivation	4	1	9	14
Medical Infused Products	1	0	3	4
Retail Store	1	0	0	1
Retail Cultivation	2	0	1	3
Retail Products	1	0	2	3
Retail Testing	0	0	0	0
Owner*/Key/Support	2	2	6	10
<b>Total Licenses</b>	<b>12</b>	<b>4</b>	<b>24</b>	<b>41</b>
<b>Total Orders Issued</b>	<b>2</b>	<b>3</b>	<b>6</b>	<b>11</b>

**Update to Table 18 of Annual Update**

<b>Stipulated, Agreement and Order (SAO)</b>				
	<b>Jan</b>	<b>Feb</b>	<b>Mar</b>	<b>Total</b>
Medical Center	3	2	3	8
Medical Cultivation	2	6	3	11
Medical Infused Products	0	3	1	4
Retail Store	0	1	1	2
Retail Cultivation	0	5	2	7
Retail Products	0	1	0	1
Retail Testing	0	0	0	0
Owner*/Key/Support	0	4	4	8
<b>Total Licenses</b>	<b>5</b>	<b>22</b>	<b>14</b>	<b>41</b>
<b>Total SAOs</b>	<b>4</b>	<b>7</b>	<b>4</b>	<b>15</b>